

Portfolio

Nardin S. Sabounchi
Multidiscipline Designer

■ JEWELRY DESIGN

■ VISUAL MERCHANDISING PROPS DESIGN

■ LEATHER GOODS DESIGN



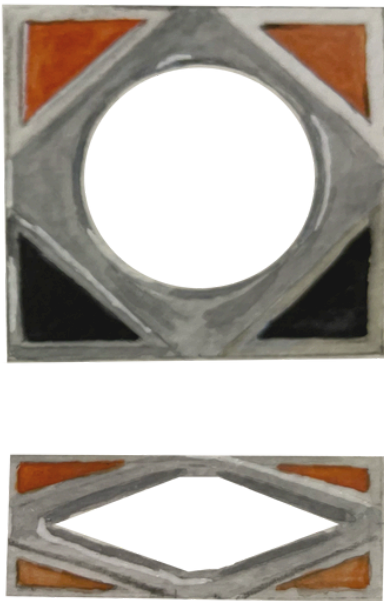
I believe in design as the artful fusion of style, form, and function. It's not just about aesthetics; it's about storytelling that creates lasting emotional connections. Every element is meticulously crafted to engage the senses and provoke contemplation, inviting viewers to explore, interpret, and connect on a deeper level.

Jewelry Design



Jewelry Design

MOSAIC RING



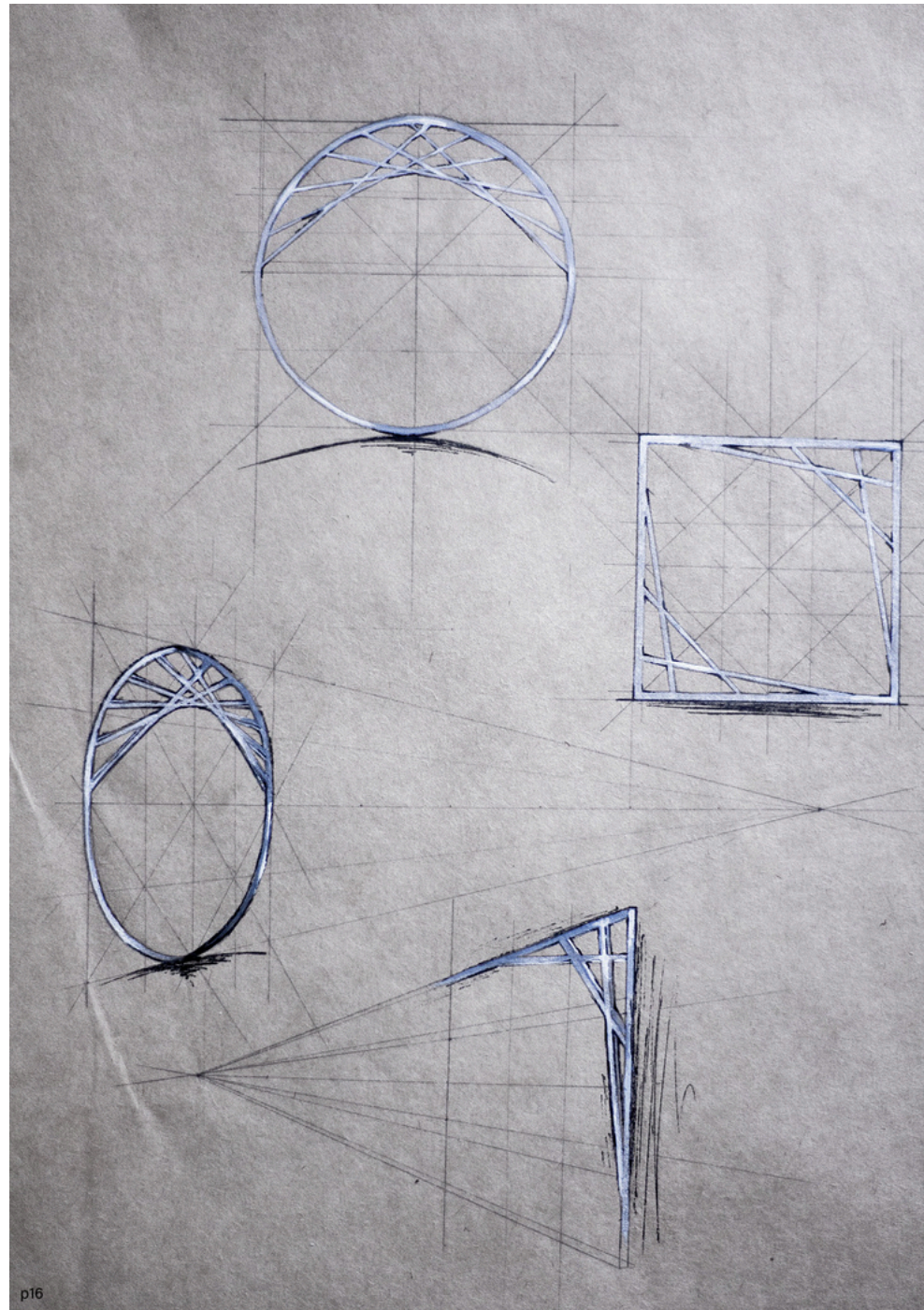
DNA paris Award
Winner, 2024



IDA Design Award
Honorable Mention, 2022

Jewelry Design

SOHRAB BRACELET



The FRONT collection is inspired by a poem of a great Persian poet, Sohrab Sepehri. "Wash up the eyes.... See the other wise". This design, inspired by the blank verse, strongly believes that point of view is much more essential than perception itself.



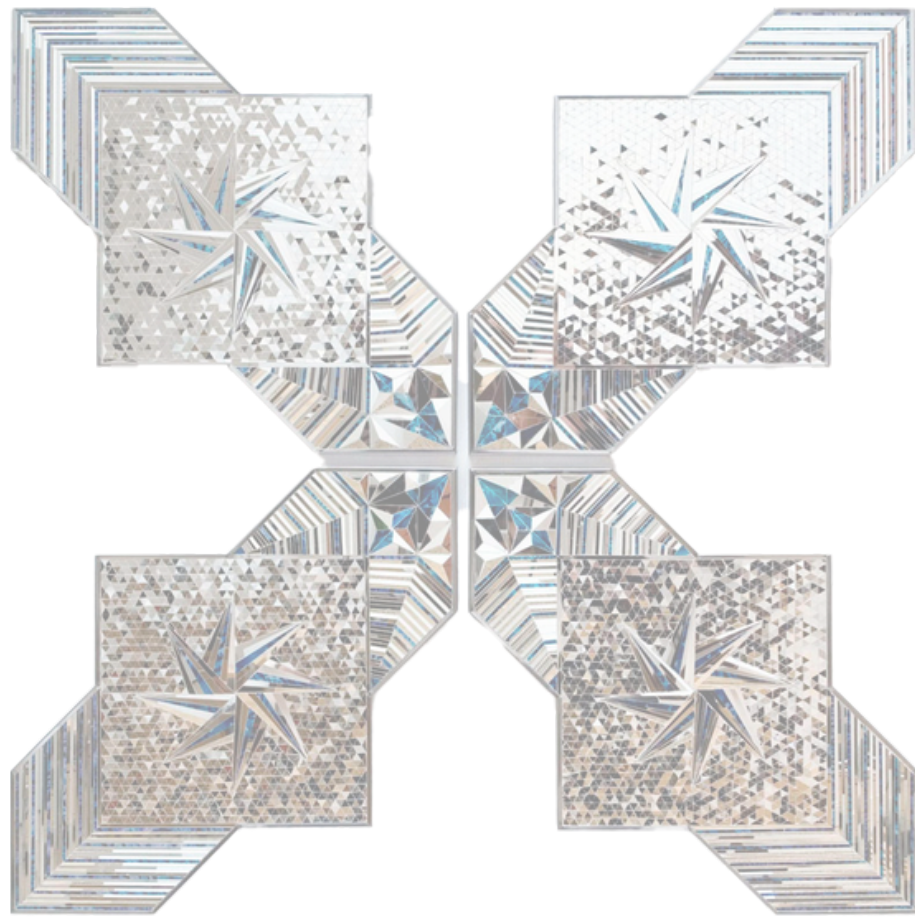
A'Design Silver Award, 2021

[ABOUT](#)

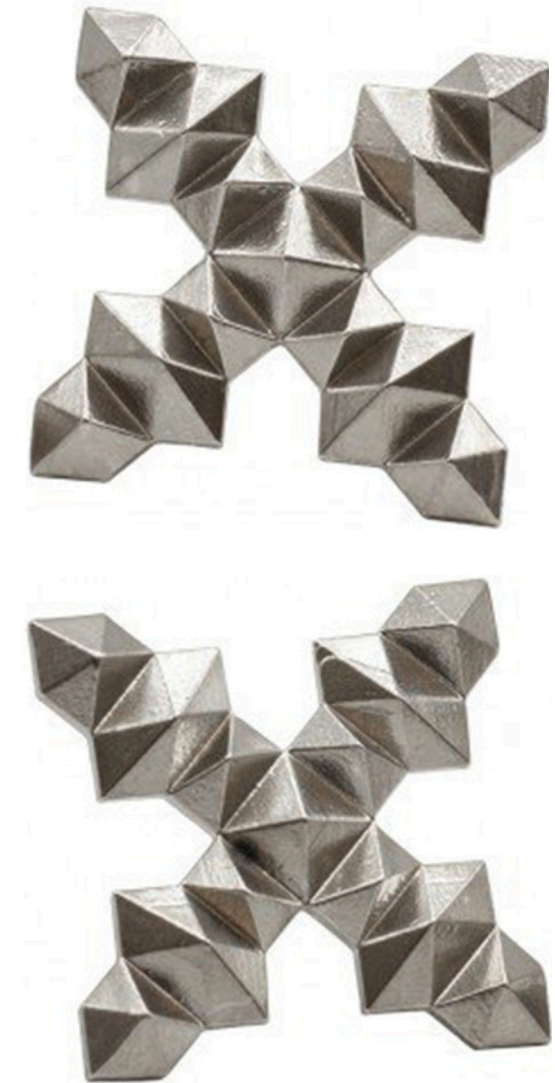
[WORK](#)

[CONTACT](#)





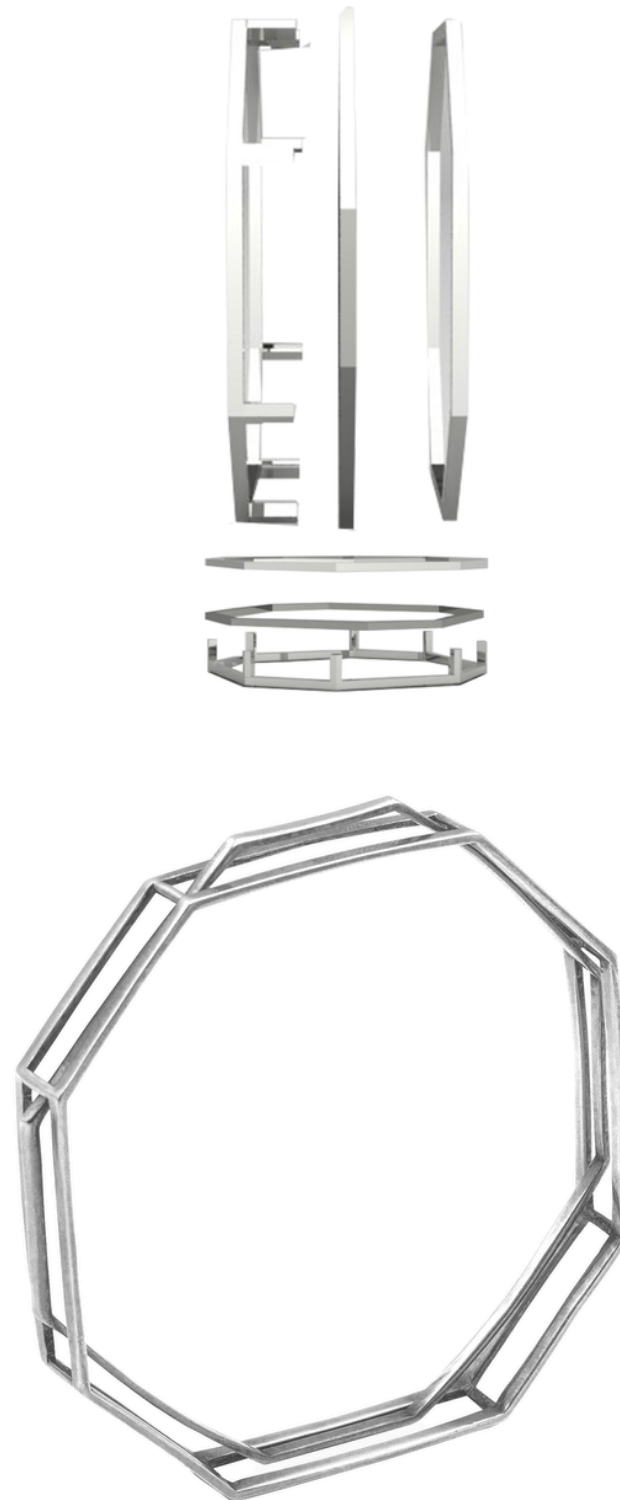
The Exo collection is inspired by Monir Farman Farmaian's artistic taste. She was a brilliant woman who was fascinated at the geometry and mirror works of Iran. When the geometrical lines enter the realm of mirrors, the exotic meaning of being, will be born.



A' Design Iron Award, 2022

Jewelry Design

TAMBOURINE BRACELET



ABOUT

WORK

CONTACT



ADesign Bronze Award, 2022

Close your eyes and listen to the universe. Can you hear it? The voice of the wind, the water, and nature. The world is made of music and dance, love and laughter. The truth is, the universe is an instrument, just like a tambourine.

The Tambourine Collection is inspired by the instrument of the same name. This musical instrument complements the rhythm of the music. Playing it is a dance in itself

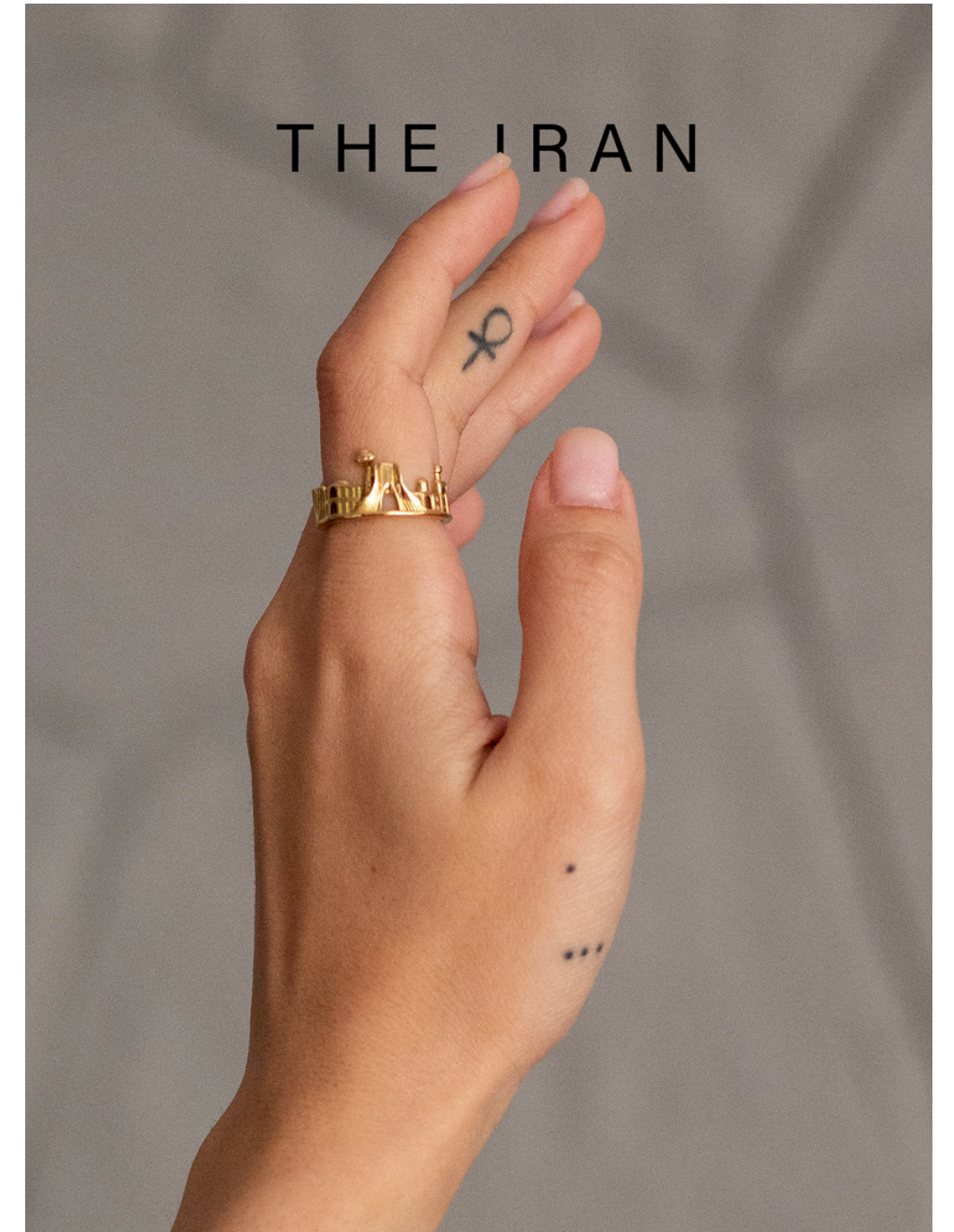
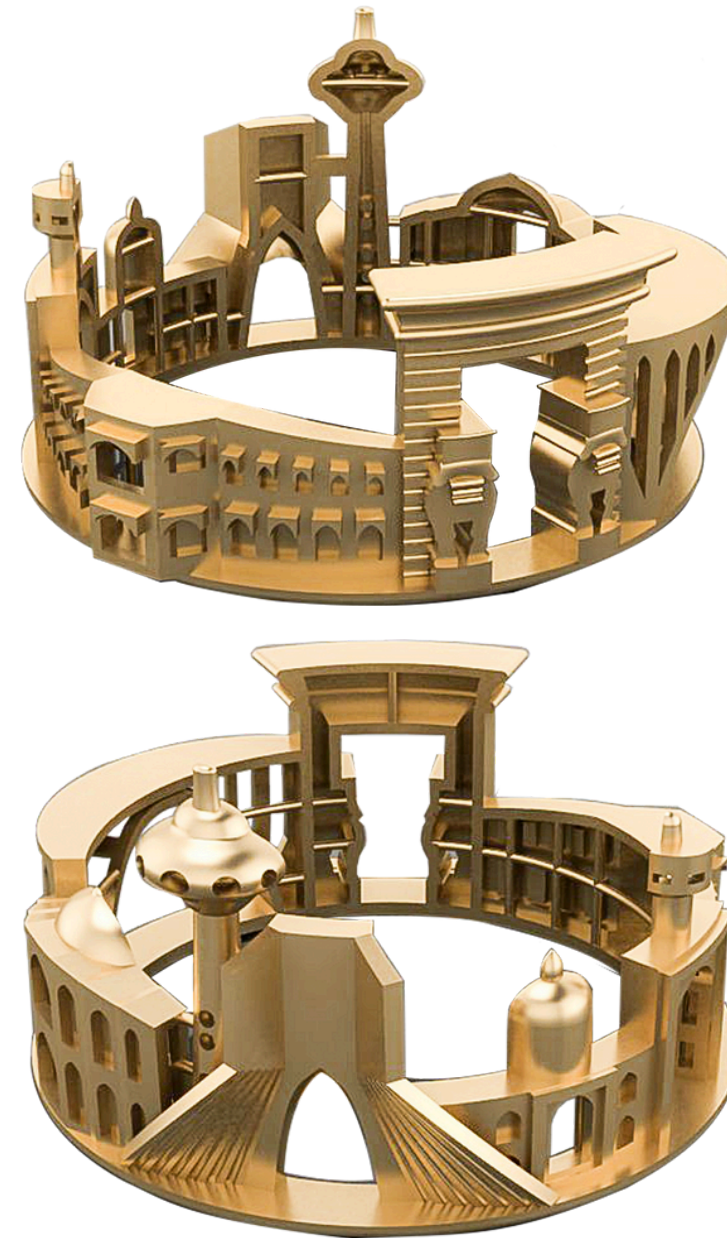
Jewelry Design

IRAN RING

[ABOUT](#)

[WORK](#)

[CONTACT](#)



Designed For Taj Jewelry

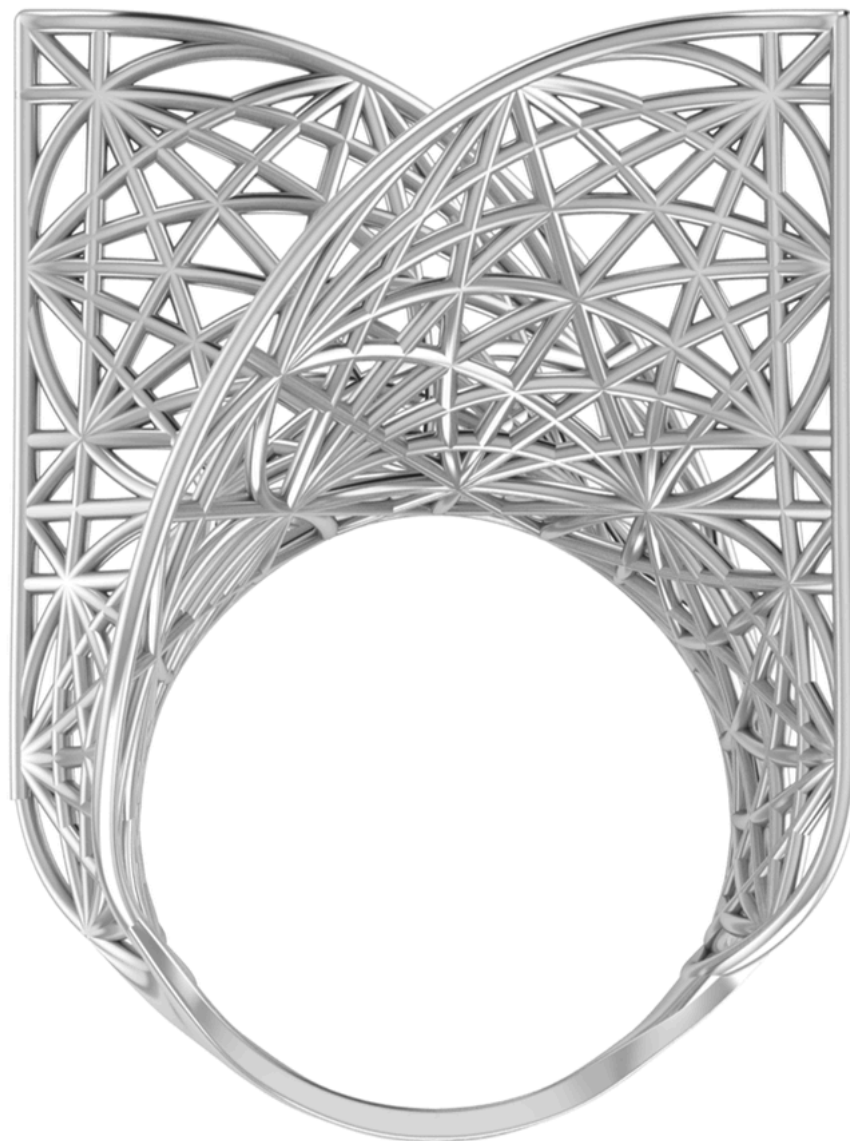
Jewelry Design

RING

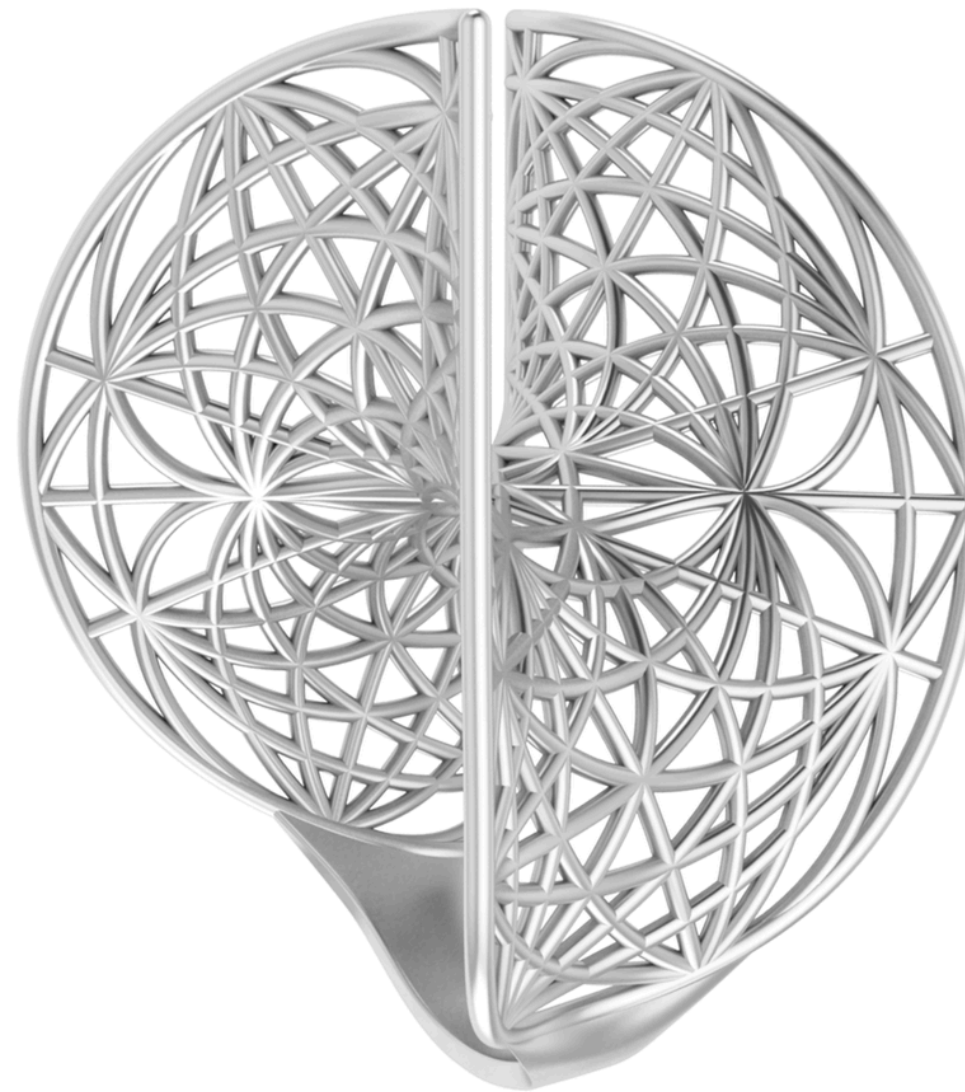
ABOUT

WORK

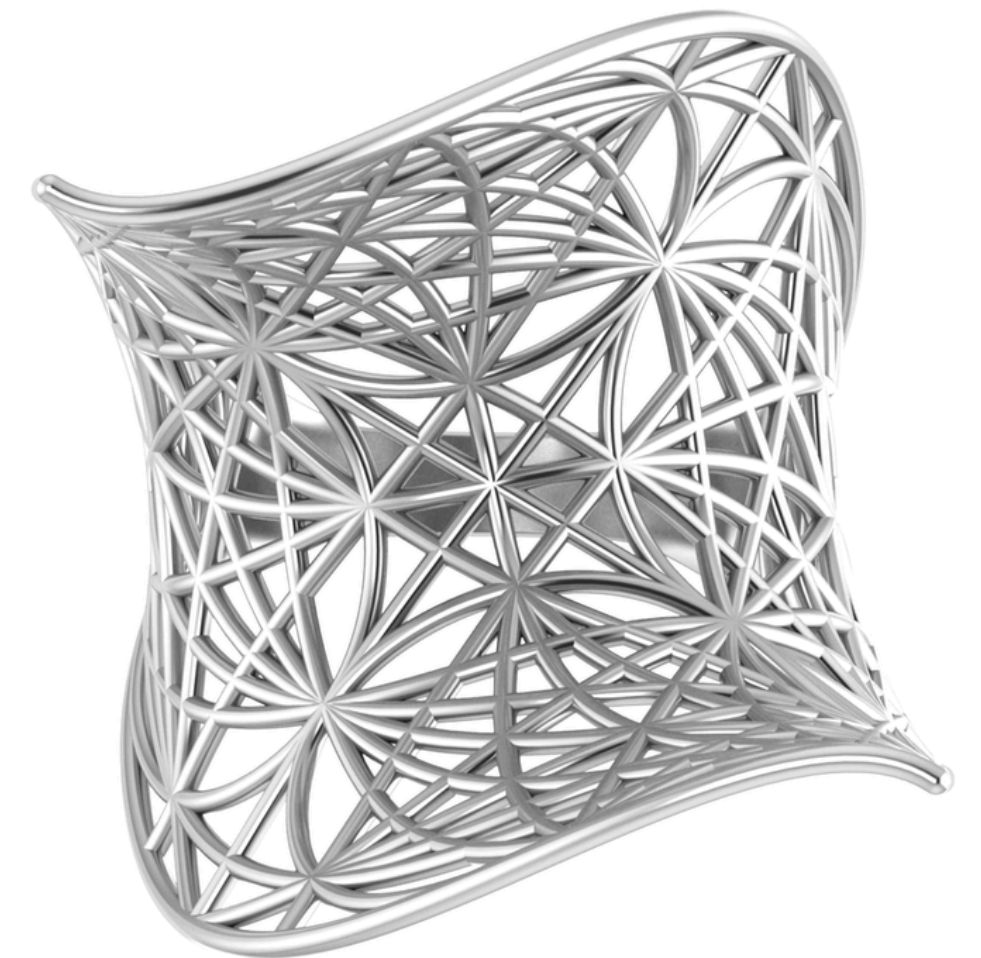
CONTACT



FRONT



SIDE



TOP

3D modeled for Banafshe Hemmati

Watch/Bracelet

LOTUS BRACELET

ABOUT

WORK

CONTACT



The Lotus Bracelet delicately embraces timepiece through perforations. it's a statement of style and functionality.

Visual Merchandising Props Design





01. TRIO BOX



02. SHOE SHINING KIT



03. PAIR PODIUM

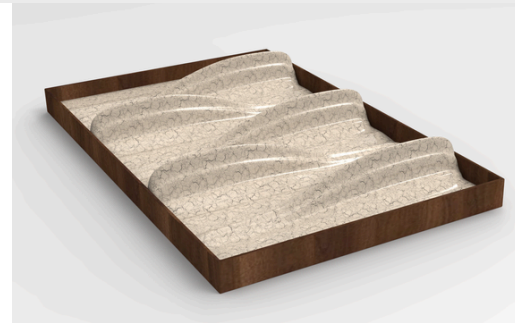
BERLUTI EDITIONS

RAPIECÉ-REPRISÉ DEPUIS 2005

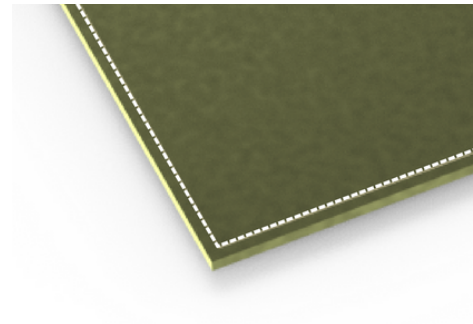
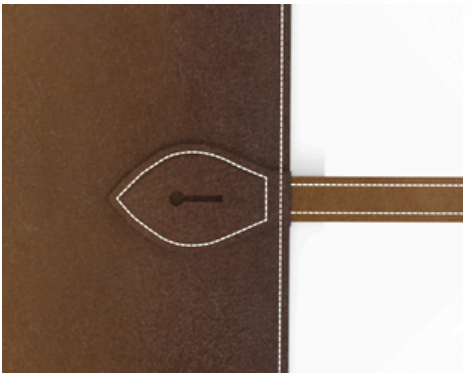
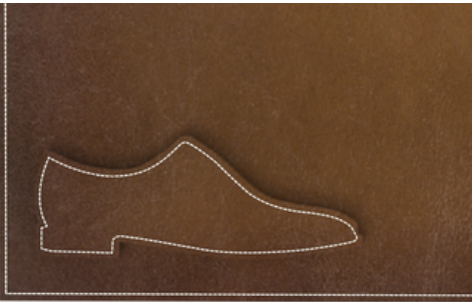


ACCESSORY PROPS ALIGN WITH THE BRAND DNA AND THE COLLECTION COLOR

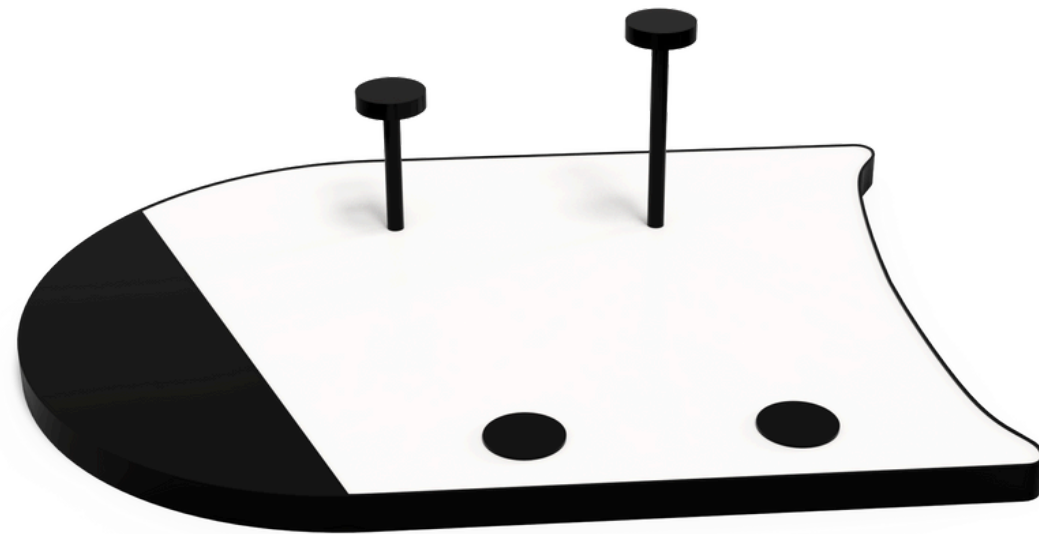












Leather Bag Design

SKETCH TO STITCH

[ABOUT](#)

[WORK](#)

[CONTACT](#)

Born from a deep understanding of client's specific needs, these bags begin with a series of sketches, finalised design confirmed by the client. Custom patterns are then created, serving as the blueprint for the final product. The leather is then meticulously cut by hand and hand-stitched.



01. Business Case



02. Back Pack



03. Tulip Hand Bag

Contact Information

Nardin S.Sabounchi

ADDRESS

Paris FR

EMAIL

nardin.saboonchi@gmail.com

PHONE

+33 619 41 36 99

SOCIAL MEDIA

www.linkedin.com/in/nardinsaboonchi